

24V, 10A Battery Charger



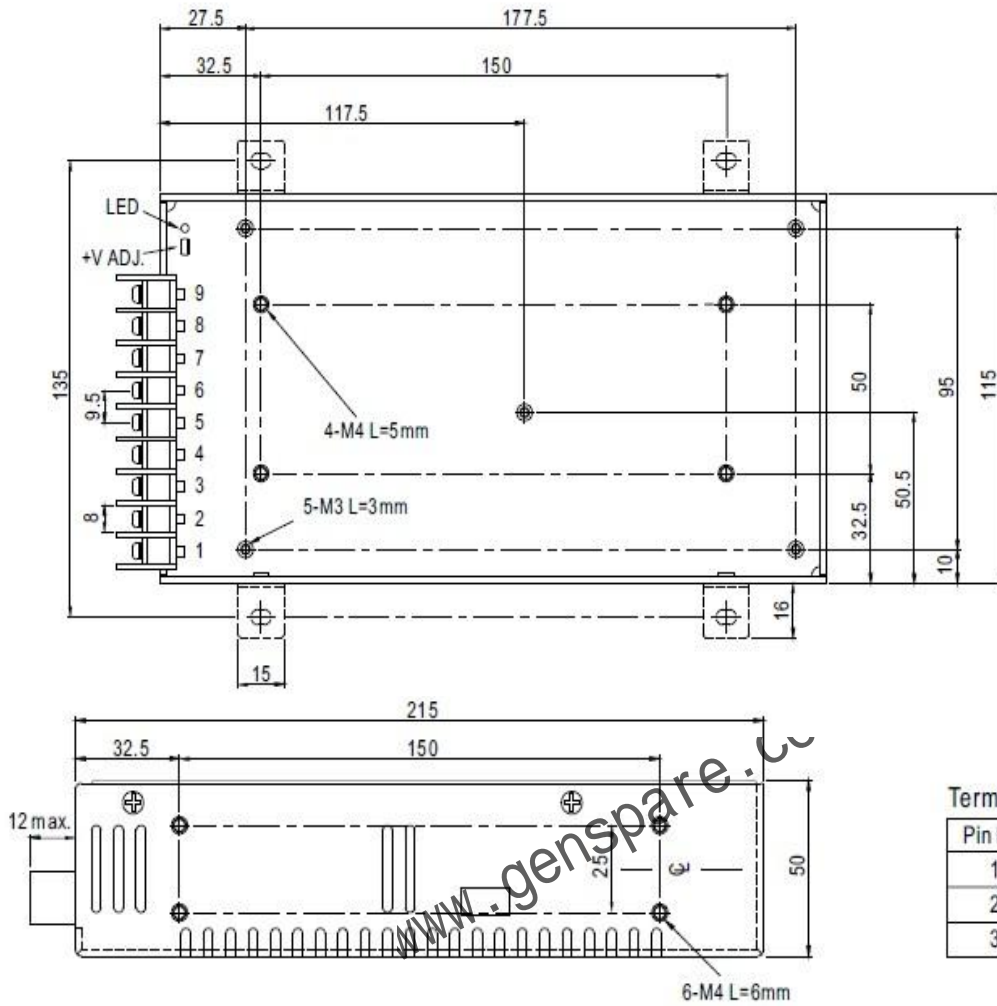
Features :

- AC input range selectable by switch
- Protections: Short circuit / Overload / Over voltage
- Cooling by free air convection
- 100% full load burn-in test
- Fixed switching frequency at 77KHz

OUTPUT	DC VOLTAGE	24V	
	RATED CURRENT	10A	
	CURRENT RANGE	0 ~10A	
	RATED POWER	241W	
	RIPPLE & NOISE (max.) Note.2	150mVp-p	
	VOLTAGE ADJ. RANGE	20 ~ 26.4V	
	VOLTAGE TOLERANCE Note.3	±1%	
	LINE REGULATION	±0.5%	
	LOAD REGULATION	±0.5%	
	SETUP, RISE TIME	200ms, 100ms at full load	
	HOLD UP TIME (Typ.)	24ms at full load	
INPUT	VOLTAGE RANGE	90 ~ 132VAC / 180 ~ 264VAC by switch	254 ~ 370VDC
	FREQUENCY RANGE	47 ~ 63Hz	
	EFFICIENCY(Typ.)	83%	
	AC CURRENT (Typ.)	3.6A/115VAC	2A/230VAC
	INRUSH CURRENT (Typ.)	45A/115VAC	45A/230VAC
	LEAKAGE CURRENT	<3.5mA / 240VAC	
PROTECTION	OVERLOAD	105 ~ 150% rated output power Protection type : Constant current limiting, recovers automatically after fault condition is removed	
	OVER VOLTAGE	27.6 ~ 32.4V Protection type : Shut down o/p voltage, re-power on to recover	
	OVER TEMPERATURE	90°C (RTH3) detect on inside ambient temperature Protection type : Hiccup mode, recovers automatically after fault	
ENVIRONMENT	WORKING TEMP.	-10 ~ +50 °C (Refer to output load derating curve)	
	WORKING HUMIDITY	20 ~ 90% RH non-condensing	
	STORAGE TEMP., HUMIDITY	-20 ~ +85 °C , 10 ~ 95% RH	
	TEMP. COEFFICIENT	±0.03%/°C (0 ~ 50 °C)	
SAFETY & EMC (Note 4)	VIBRATION	10 ~ 500Hz, 2G 10min./1cycle, period for 60min. each along X, Y, Z axes	
	SAFETY STANDARDS	Design refer to UL1012	
	WITHSTAND VOLTAGE	I/P-O/P:1.5KVAC I/P-FG:1.5KVAC O/P-FG:0.5KVAC	
	ISOLATION RESISTANCE	I/P-O/P, I/P-FG, O/P-FG:100M Ohms/500VDC	
OTHERS	EMI CONDUCTION &	Design refer to FCC Part15 J Conduction Class B	
	MTBF	271.9K hrs min. MIL-HDBK-217F (25°C)	
	DIMENSION	215*115*50mm (L*W*H)	
NOTE	PACKING	0.93Kg; 12pcs/12Kg/0.92CUFT	
	<p>1. All parameters NOT specially mentioned are measured at 230VAC input, rated load and 25 of ambient temperature.</p> <p>2. Ripple & noise are measured at 20MHz of bandwidth by using a 12" twisted pair-wire terminated with a 0.1uf & 47uf parallel capacitor.</p> <p>3. Tolerance : includes set up tolerance, line regulation and load regulation.</p>		

Mechanical Specification

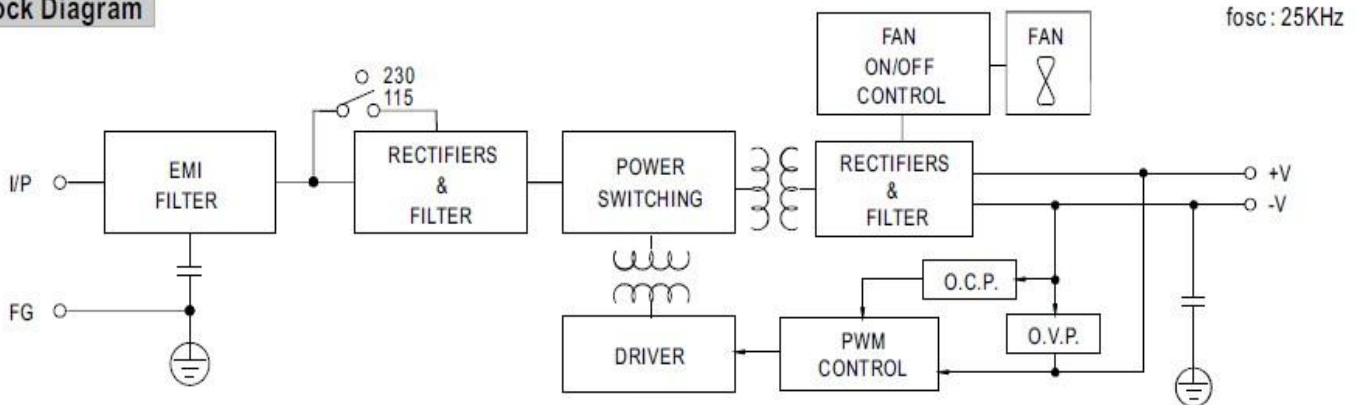
Case No. 912E Unit:mm



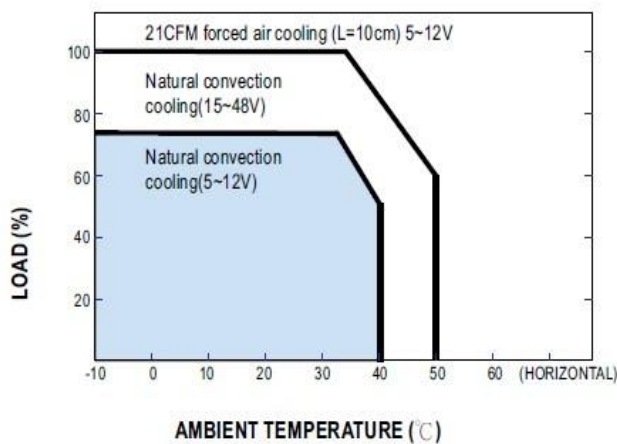
Terminal Pin No. Assignment

Pin No.	Assignment	Pin No.	Assignment
1	AC/L	4-6	DC OUTPUT -V
2	AC/N	7-9	DC OUTPUT +V
3	FG \perp		

Block Diagram



Derating Curve



Static Characteristics (24V)

